



*Clean and depaint in and around
your plant*

ON SITE, ON TIME, ON BUDGET

Often without shutting down the work area.



*Grease, oil, dirt, surface corrosion,
and failing paint were removed from
equipment inside and outside this petro-
chemical plant, without the shut-down of
adjacent equipment.*

Remove: oil, dirt, surface
corrosion, paint, grease,
process residue....and more.

From: pumps, TEFC-rated electronic motors*, gas
turbines, reciprocating compressors, fin fan coolers,
plate and frame heat exchangers, valves, gauges, stainless
steel and aluminum jacketing, concrete and food processing.

*Not recommended on ODP (open drip proof) motor enclosures.



REVOLUTIONIZE your plant maintenance

Industrial Cleaning
and Coating Removal

1.888.537.2888
info@tbsproducts.com

TBS

TECHNICAL BARRIER SYSTEMS INC.



Remove coatings i.e. graffiti,
grease, grime from brick
and concrete structures.

The ACCUSTRIP process...

*-is non-sparking**

Armex does not cause thermal sparks in striking the workpiece. This eliminates the need to shut down the work area because of the danger of sparking media.

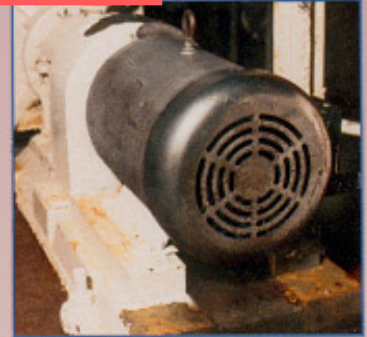
-ideal for turnaround situations

Critical service cleaning is accomplished quickly and effectively, even in tight areas.

-uses very little water while blasting

Only one-half gallon of water per minute while blasting is usually all that's needed.

*The ACCUSTRIP process safely
cleans and depaints rotating
equipment*



- uses water-soluble media

Clean-up is faster and easier than with sandblasting or solvents.

*- is non-toxic and environmentally
sensible*

ARMEX poses no special safety or disposal problems; in fact, it may even be beneficial as a buffering agent during the waste water treatment process.**

-virtually any surface

Clean and repaint iron, stainless steel, galvanized metal, aluminum, concrete, glass, rubber, neoprene, composite materials...and more. Does not damage nameplates.

-surfaces prior to weld inspection

Quickly exposes surfaces for non-destructive inspection (NDI), with no metal removal and no crack closure.

Clean and repaint...

- rotating equipment

Water-soluble ARMEX gently yet thoroughly cleans pumps, gas turbines, reciprocating compressors, and other rotating equipment-----usually on site.

*Even the most sensitive surfaces are
cleaned quickly and efficiently*

* Equipment must be grounded to prevent electrostatic discharge. See operations manual..

** Consult applicable worker and environmental safety regulations.

Services Provided

- Multi-media blasting e.g. sand, soda, glass bead ect.
- 70' x 30' enclosed blasting area
- Specialized painting
- Newly constructed state of the art paint booth 65'1 x 22'w x 16'h
- Stationary, as well as fully mobilized blasting and painting
- 24 hours, 7 days a week service
- Quick turnaround time
- Versatile, can handle heavy equipment i.e. railcars, large trucks, including Euclid's dump trucks, transport trucks, excavators, backhoes, industrial machinery and boats

-Fire Damage - Graffiti - Structure Cleaning

